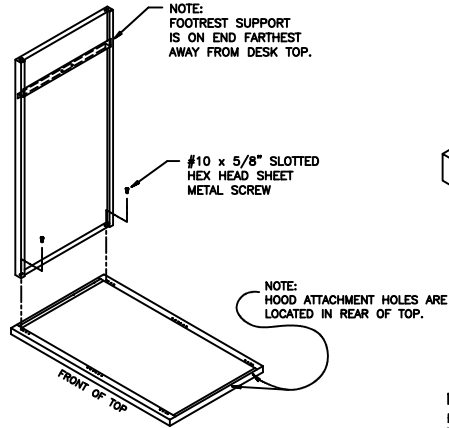
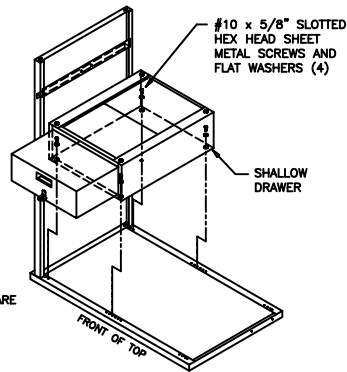


STEP #1



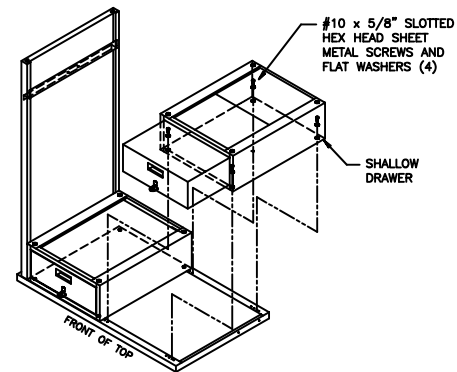
ATTACH THE END PANEL TO THE DESK TOP WITH (2) #10 x 5/8" SLOTTED HEX HEAD SHEET METAL SCREWS SUPPLIED WITH THE END PANEL.

STEP #2



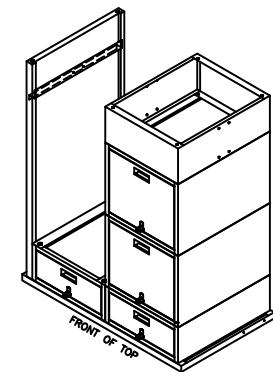
NOTE:
BEFORE ATTACHING THE BENCH DRAWERS, ASSEMBLE THE "LOCK CLIP AND DRAWER STOP ASSEMBLY" IN ACCORDANCE WITH ASSY. INSTRUCTION #10645-BA.
REMOVE BENCH DRAWER FROM DRAWER CASE.
USING (4) #10 x 5/8" SLOTTED HEX HEAD SHEET METAL SCREWS AND FLAT WASHERS FURNISHED WITH THE DESK TOP, ATTACH A SHALLOW BENCH DRAWER TO THE DESK TOP.

STEP #3



ATTACH THE OTHER SHALLOW BENCH DRAWER TO THE OTHER HALF OF THE BOTTOM OF THE DESK TOP USING (4) MORE OF THE SAME SHEET METAL SCREWS AND FLAT WASHERS.

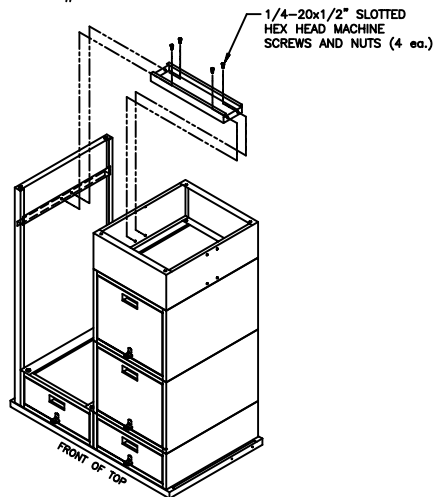
STEP #4



BOLT A DEEP BENCH DRAWER TO THE BOTTOM OF A SHALLOW BENCH DRAWER WITH (4) 1/4"-20x1/2" SLOTTED TRUSS HEAD MACHINE SCREWS, 1/4" INTERNAL LOCK WASHERS, AND 1/4"-20 NUTS SUPPLIED WITH THE BENCH DRAWERS.

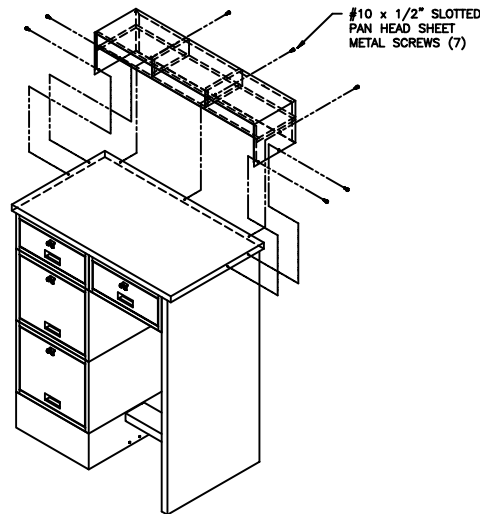
CONTINUE BY ADDING ANOTHER DEEP BENCH DRAWER, USING THE SAME HARDWARE SUPPLIED WITH THAT DRAWER. ATTACH THE BASE WITH THE (4) 1/4"-20x1/2" SLOTTED TRUSS HEAD MACHINE SCREWS AND 1/4"-20 NUTS SUPPLIED WITH THE BASE.

STEP #5

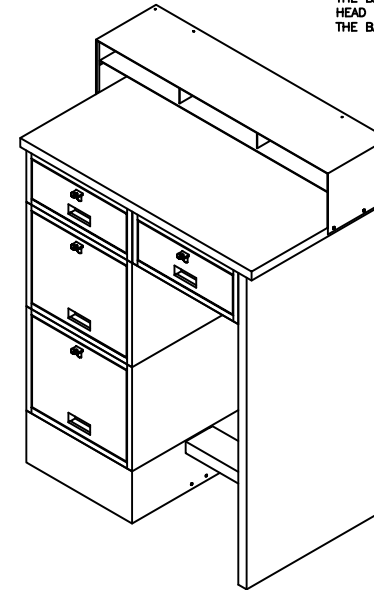


BOLT THE FOOTREST TO THE BASE AND TO THE FOOTREST SUPPORT WITH (4) 1/4"-20x1/2" SLOTTED HEX HEAD MACHINE SCREWS AND 1/4"-20 NUTS FURNISHED WITH THE END PANEL.

STEP #6



FLIP THE ASSEMBLY UPRIGHT AND ATTACH THE HOOD ASSEMBLY WITH (7) #10 x 1/2" PAN HEAD SHEET METAL SCREWS SUPPLIED WITH THE HOOD ASSEMBLY.



COMPLETED UNIT

HARDWARE

- 1/4" - 20 x 1/2" SLOTTED TRUSS HD. MACH. SCREW
- 1/4" - 20 HEX NUT
- #10 - 1/2" PAN HEAD SHEET METAL SCREW
- #10 - 5/8" HEX HEAD SHEET METAL SCREW
- 17/64" FLAT WASHER

LYON ASSEMBLY INSTRUCTIONS FOR MODULAR SHOP DESK

LYON WORKSPACE PRODUCTS, INC.
P.O. BOX 671 AURORA, IL 60507
E-010206-01
E-112106-01

4302-DA