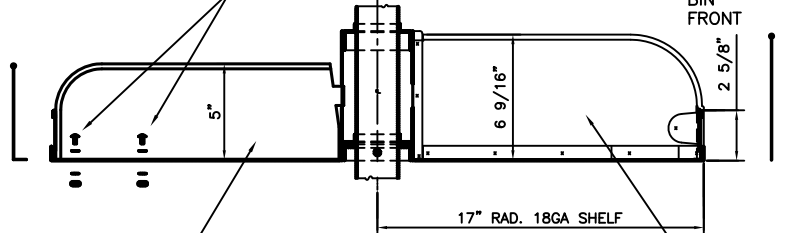




FASTEN ADJUSTABLE  
DIVIDERS WITH  
#8 SCREWS,  
LOCKWASHERS, AND  
NUTS THRU FLANGES



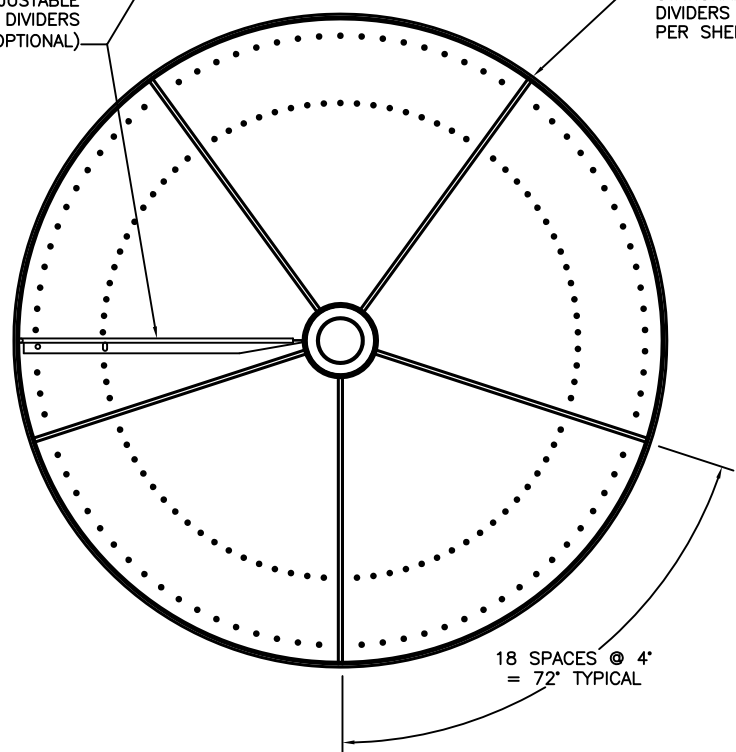
22 GA  
BIN  
FRONT



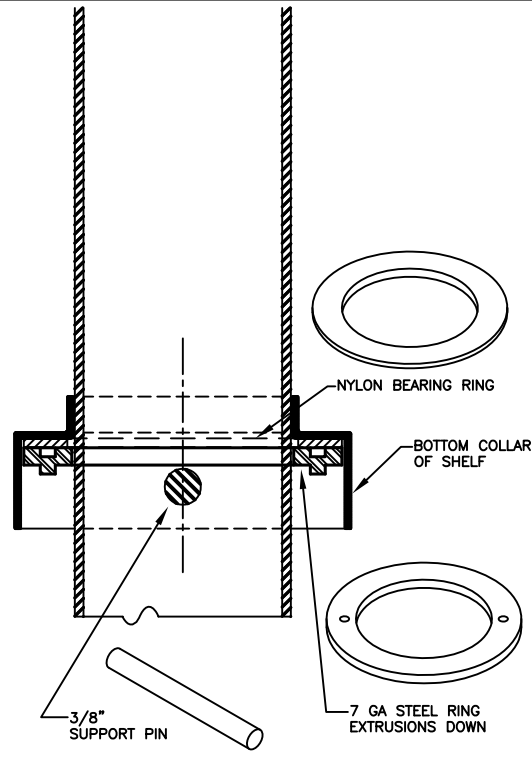
3965 (25 PK)  
22GA ADJUSTABLE  
DIVIDERS  
(OPTIONAL)

PARTIAL SECTION  
THRU SHELF

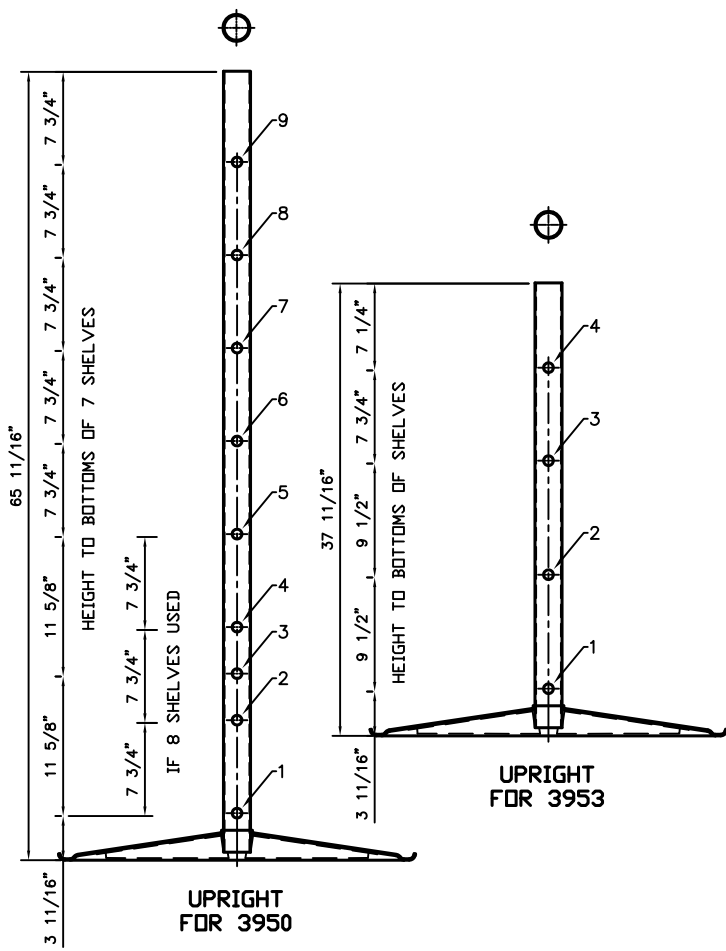
(5) 22 GA  
STATIONARY  
DIVIDERS  
PER SHELF



PLAN VIEW  
OF SHELF



PARTIAL SECTION THRU BEARING



**ASSEMBLY OPERATIONS**

1. INSERT PINS IN LOWER HOLE #1 IN UPRIGHT.
2. PLACE A STEEL WASHER ON UPRIGHT WITH EXTRUSIONS DOWN. PLACE A NYLON RING BEARING ON THE UPRIGHT.
3. PLACE REVOLVING SHELF ON THE UPRIGHT.
4. REPEAT PROCEDURE FOR REMAINING HOLES COMPLETING THE LOWER SHELVES FIRST.

NOTE: SKIP HOLES 2 AND 4 FOR 7 SHELF UNITS.  
AN EXTRA SHELF (OPTIONAL) MAY BE INSTALLED ON THE 3950 BY UTILIZING HOLES 2 AND 4 INSTEAD OF HOLE 3.

- TO INSTALL REMOVEABLE DIVIDERS
1. INSERT THE TANG ON THE BACK OF THE DIVIDER INTO A SLOT IN THE HUB OF THE SHELF.
  2. BOLT THE BOTTOM FLANGE OF THE DIVIDER TO THE SHELF WITH (2) #8 MACHINE SCREWS AND NUTS PLACING A LOCKWASHER UNDER THE HEAD OF THE SCREW AND ALSO UNDER EACH NUT.

REVISED	DATE	FACTORY NOTE
E-040120-1	2-24-10	ALL DIMENSIONS SHOWN ARE TO BE HELD TO ±1/32" ON FORMATIONS ±1/64" ON HOLE CTRS. UNLESS OTHERWISE SPECIFIED.
		ALL SHARP BURR OR SHEARED EDGES TO BE REMOVED WHERE NOTED.

**ASSEMBLY INSTRUCTION  
FOR 3950 AND 3953  
REVOLVING BINS**

THIS DWG IN BOOK	DATE	DRAWN BY	CHECKED BY	SHT.
ASSY	2-24-10	ES		1

LYON WORKSPACE PRODUCTS, INC.  
P.O. BOX 671 AURORA, IL 60507

**4781-DA**