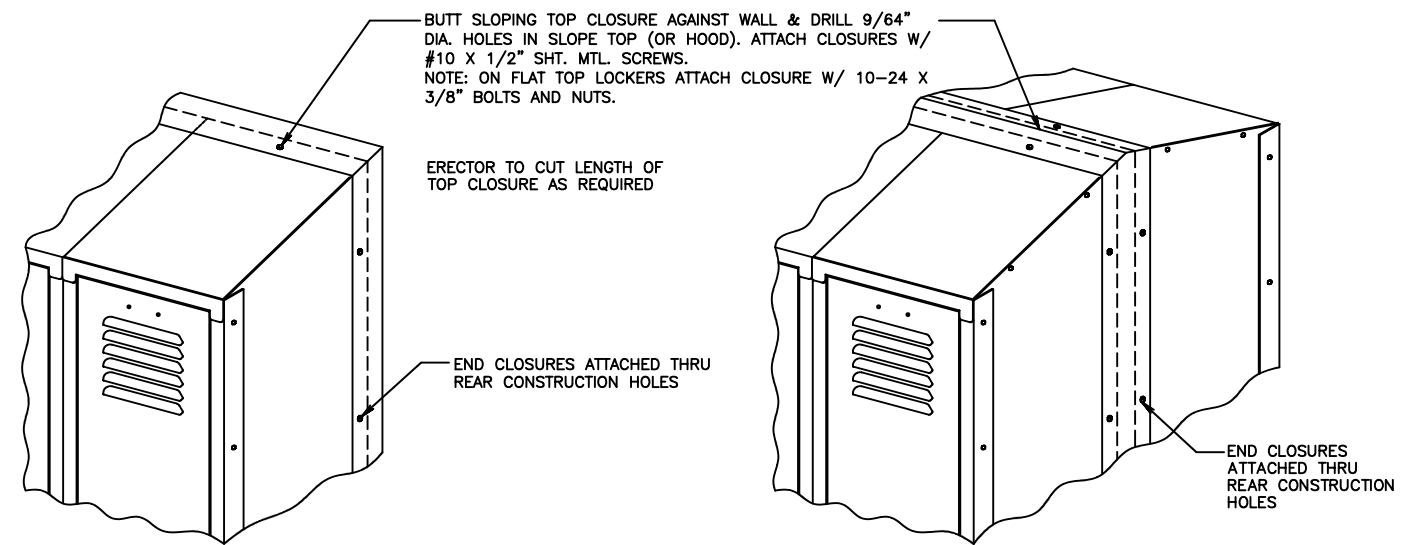
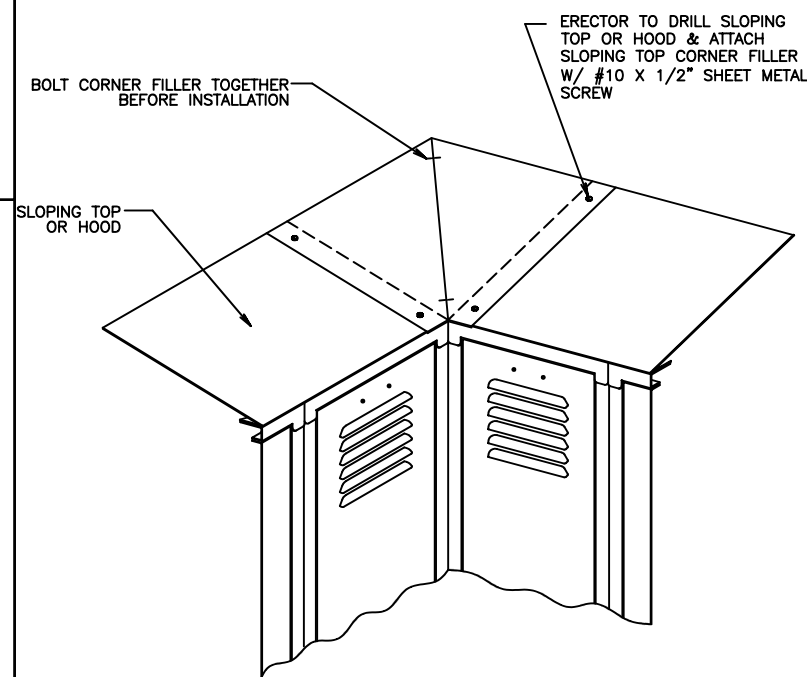


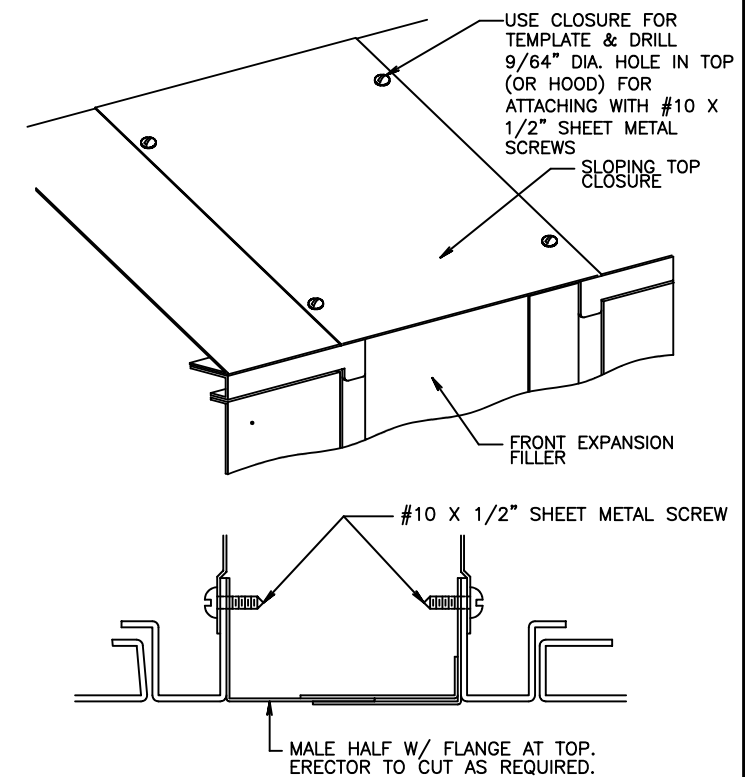
INSTALLATION OF SLOPING END TOP CLOSURES



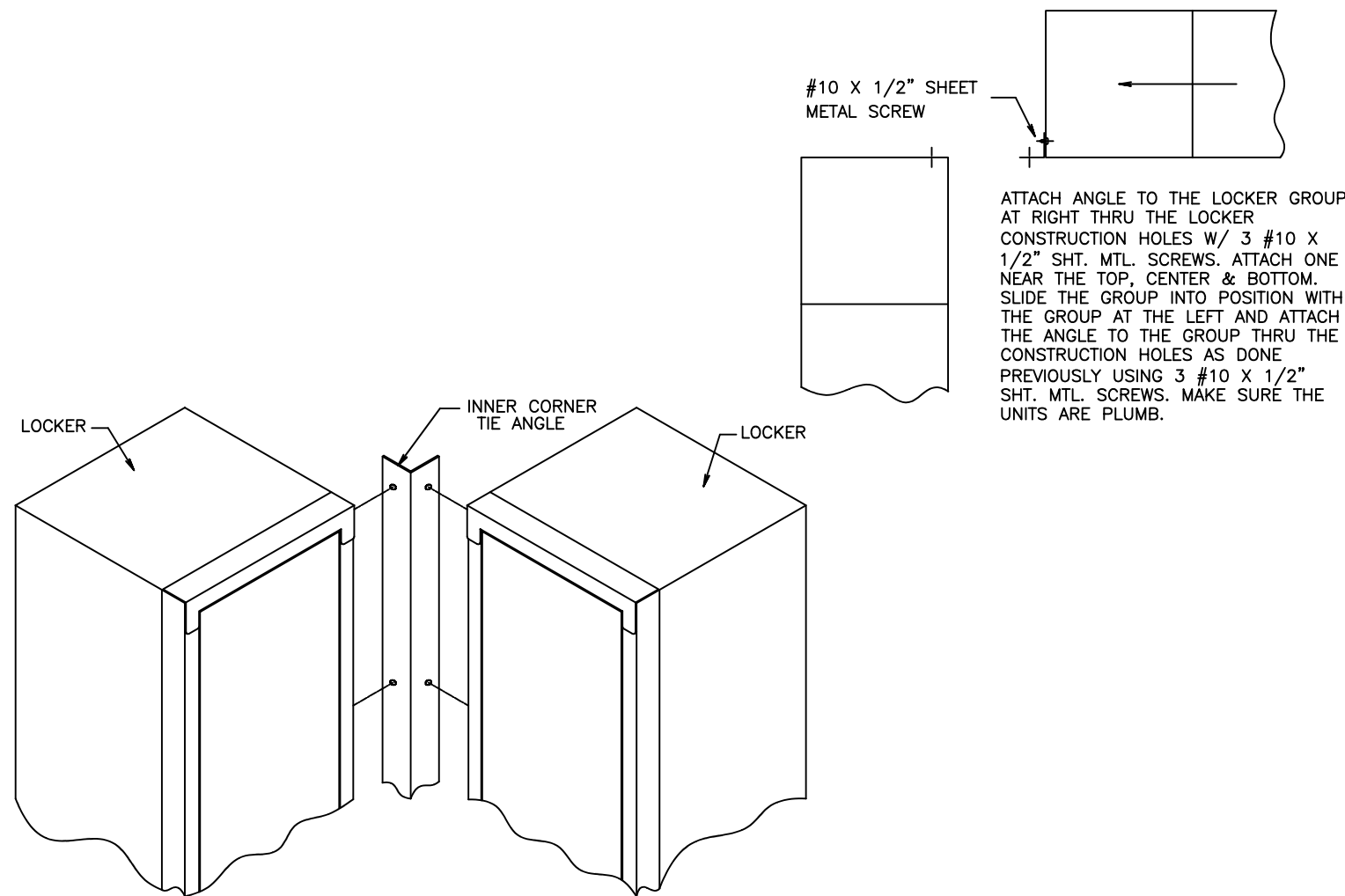
INSTALLATION OF TOP AND END CLOSURE STRIP



INSTALLATION OF SLOPING TOP CORNER FILLER

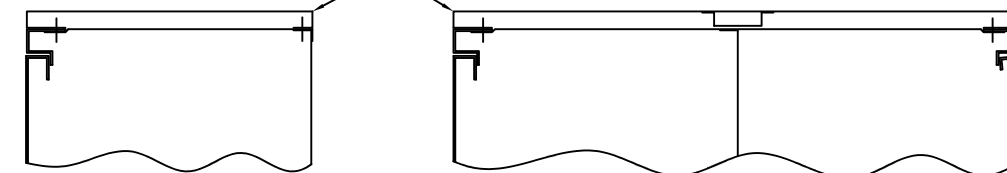


INSTALLATION OF FRONT EXPANSION FILLER



INSTALLATION OF INNER CORNER TIE ANGLE

ATTACH END FINISHING PANELS W/ 6 #10 X 1/2" SHT. MTL. SCREWS ONE NEAR TOP, CENTER & BOTTOM THRU FRONT & REAR CONSTRUCTION HOLES.



SINGLE ROW

DOUBLE ROW

INSTALLATION OF END FINISHING PANELS

INSTALLATION INSTRUCTIONS
FOR LOCKERS
CLOSURES,
FILLERS & PANELS

LYON LYON METAL PRODUCTS, INC.
P.O. BOX 671 AURORA, ILL. 60507

REVISIONS
5-2-85
11-15-91
8-22-94
E-021298-01
E-010826-1

9111-CA