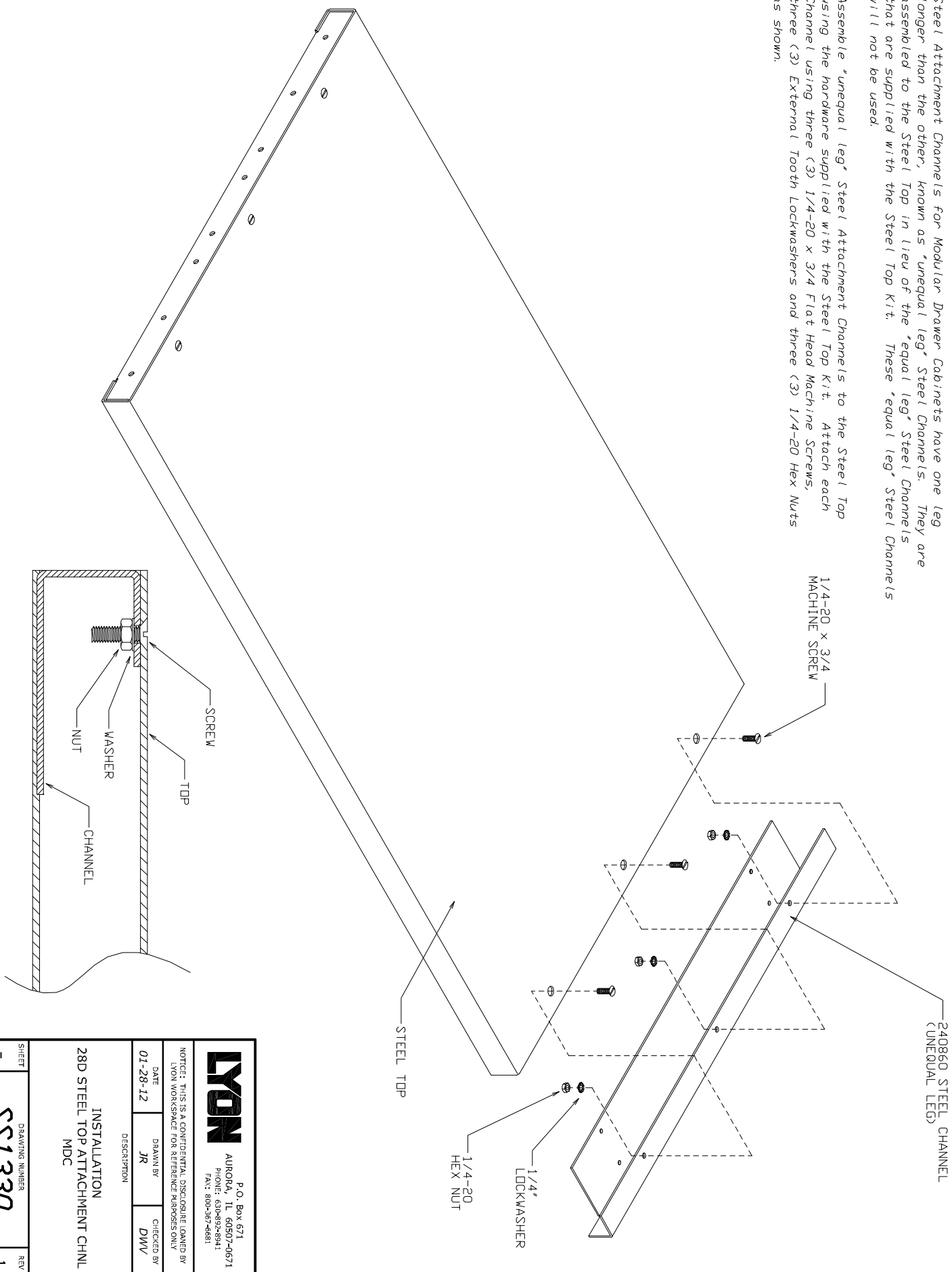


ATTACHMENT OF STEEL TOP CHANNELS

Steel Attachment Channels for Modular Drawer Cabinets have one leg longer than the other, known as "unequal leg" Steel Channels. They are assembled to the Steel Top in lieu of the "equal leg" Steel Channels that are supplied with the Steel Top Kit. These "equal leg" Steel Channels will not be used.

Assemble "unequal leg" Steel Attachment Channels to the Steel Top using the hardware supplied with the Steel Top Kit. Attach each Channel using three (3) 1/4-20 x 3/4 Flat Head Machine Screws, three (3) External Tooth Lockwashers and three (3) 1/4-20 Hex Nuts as shown.



LYON
 P.O. Box 671
 AURORA, IL 60507-0671
 PHONE: 630-892-8841
 FAX: 800-367-4681

NOTICE: THIS IS A CONFIDENTIAL DISCLOSURE LOANED BY LYON WORKSPACE FOR REFERENCE PURPOSES ONLY

DATE	DRAWN BY	CHECKED BY
01-28-12	JR	DWV

DESCRIPTION
 INSTALLATION
 28D STEEL TOP ATTACHMENT CHNL
 MDC

SHEET	DRAWING NUMBER	REV
-	SS1330	1