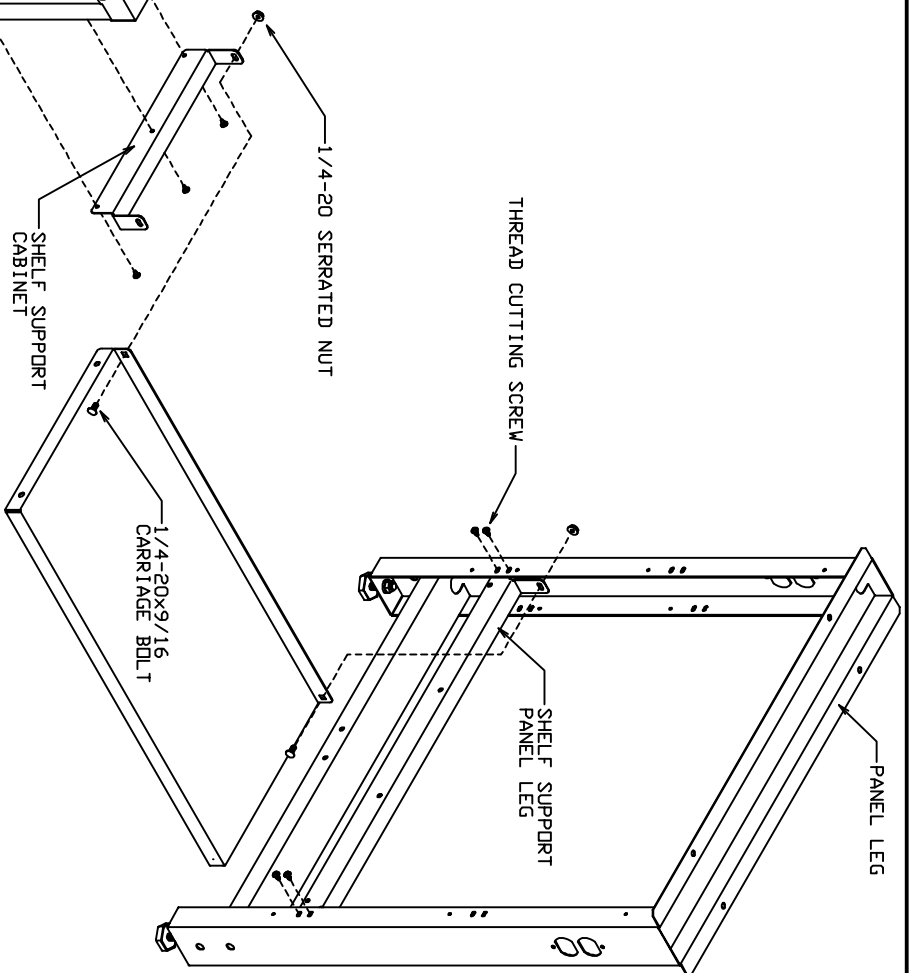
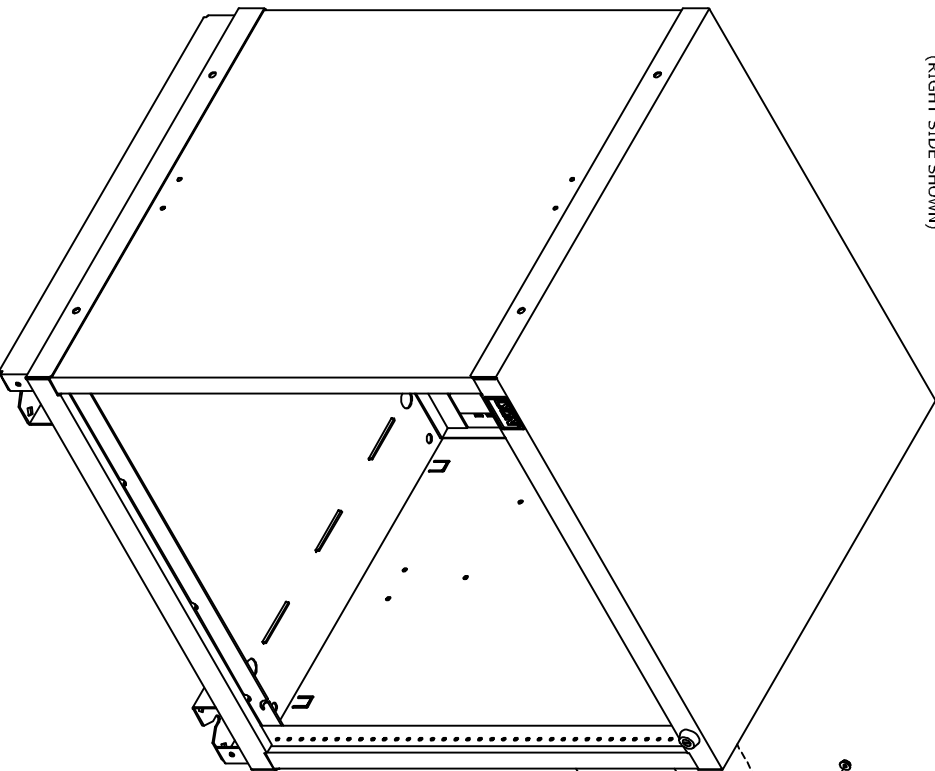


CABINET DRILL PATTERN  
(RIGHT SIDE SHOWN)



**ASSEMBLY INSTRUCTIONS**

DRILL THREE (3) 0.166 DIAMETER HOLES ON THE SIDE OF THE CABINET WHICH IS TO ACCEPT ATTACHMENT OF THE SHELF SUPPORT PER DRILL PATTERN SHOWN ABOVE.  
 ATTACH BOTH SHELF SUPPORTS TO CABINET AND PANEL LEG WITH SUPPLIED #10-24 THREAD CUTTING SCREWS.  
 ATTACH SHELF TO SUPPORTS WITH SUPPLIED 1/4-20x9/16 CARRIAGE SCREWS AND 1/4-20 SERRATED FLANGE NUTS.  
 SEE BACK SIDE OF SHEET FOR OTHER OPTIONS.

**SUPPLIED HARDWARE**

1/4-20x9/16 CARRIAGE SCREW	
1/4-20 SERRATED FLANGE NUT	
#10-24 THREAD CUTTING SCREW	

**LYON**  
 P.O. Box 671  
 AURORA, IL 60507-0671  
 PHONE: 630-892-8941  
 FAX: 800-367-6681

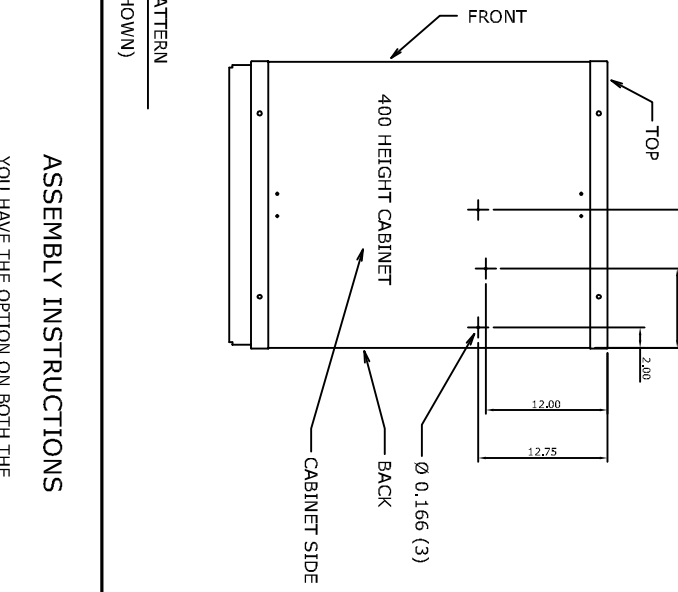
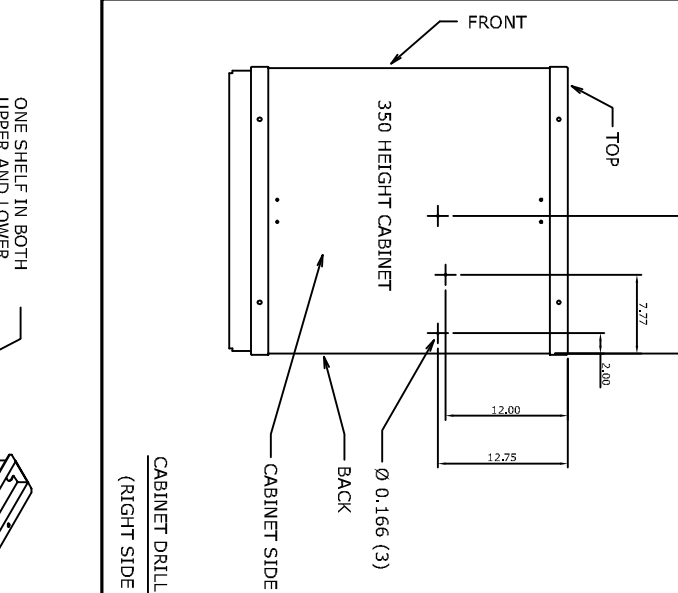
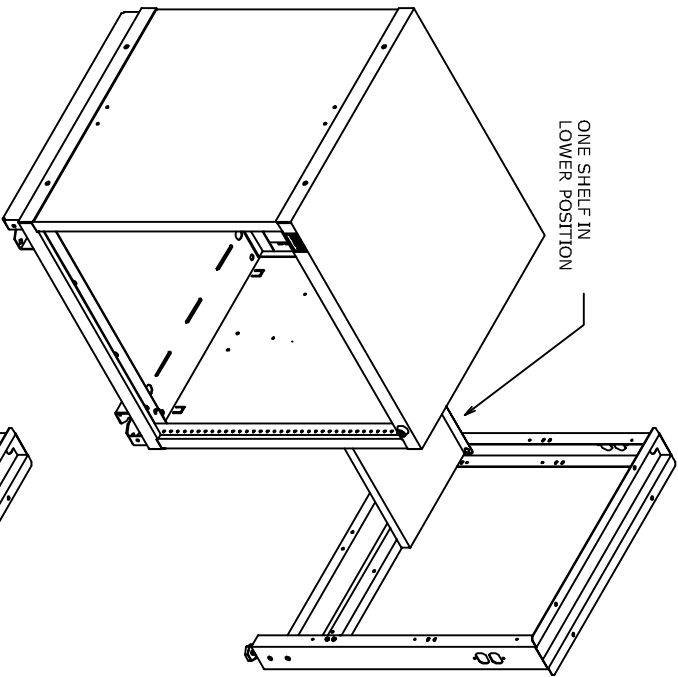
NOTICE: THIS IS A CONFIDENTIAL DISCUSSION, LOANED BY LYON WORKSPACE FOR REFERENCE PURPOSES ONLY.

DATE	DRAWN BY	CHECKED BY
07-19-12	JR	DWV

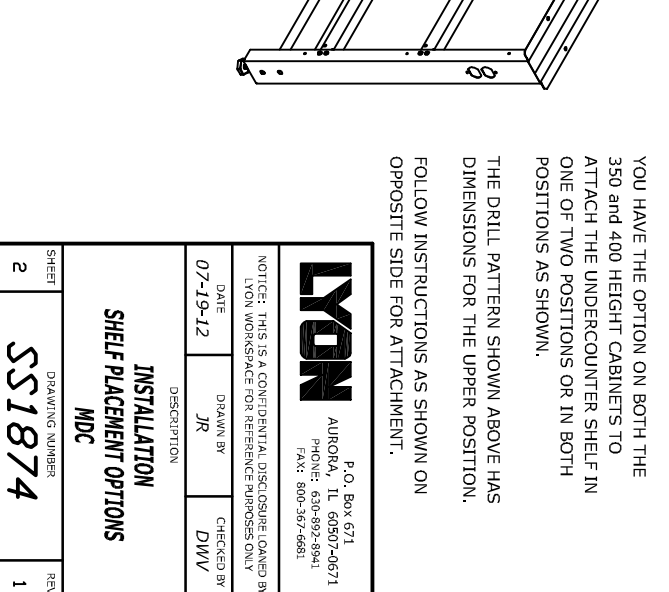
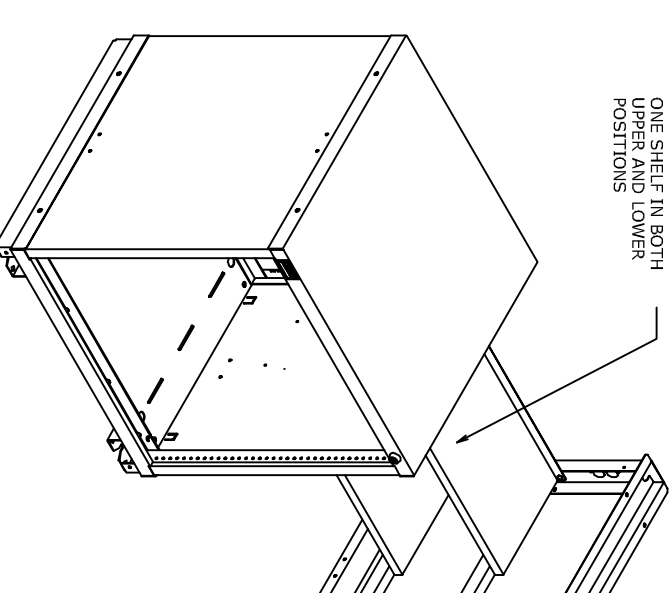
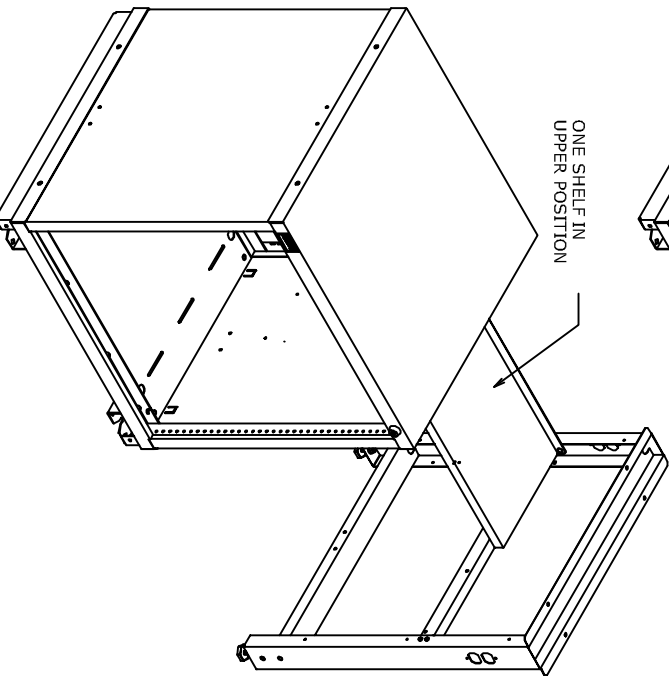
DESCRIPTION  
**INSTALLATION UNDER COUNTER SHELF MDC**

SHEET	1	REV	1
DRAWING NUMBER	<b>SS1874</b>		

# SHELF PLACEMENT OPTIONS FOR 350 and 400 HEIGHT CABINETS



CABINET DRILL PATTERN  
(RIGHT SIDE SHOWN)



## ASSEMBLY INSTRUCTIONS

YOU HAVE THE OPTION ON BOTH THE 350 and 400 HEIGHT CABINETS TO ATTACH THE UNDERCOUNTER SHELF IN ONE OF TWO POSITIONS OR IN BOTH POSITIONS AS SHOWN.

THE DRILL PATTERN SHOWN ABOVE HAS DIMENSIONS FOR THE UPPER POSITION. FOLLOW INSTRUCTIONS AS SHOWN ON OPPOSITE SIDE FOR ATTACHMENT.



P.O. Box 671  
AURORA, IL 60507-0671  
PHONE: 800-892-8941  
FAX: 800-367-6681

NOTICE: THIS IS A CONFIDENTIAL DISCLOSURE LOANED BY LYON WORKSPACE FOR REFERENCE PURPOSES ONLY

DATE: 07-19-12  
DRAWN BY: JR  
CHECKED BY: DMV

### INSTALLATION SHELF PLACEMENT OPTIONS

MDC

SHEET	2	REV	1
DRAWING NUMBER	SS1874		